

LIGHT COMMERCIAL AC

『U-MATCH』



Inverter Series

The U-Match series is a kind of split type air conditioner that the outdoor unit can be connected to different types of indoor units, which can meet various indoor decoration requirements for residential and light commercial locations.



Auto
clean



Anti-cold
function



Compact
design



Comprehensive
protection



Easier
maintainability



High
efficiency



High
ESP



Intelligent
defrosting



Inner
groove
copper



Quality
motor



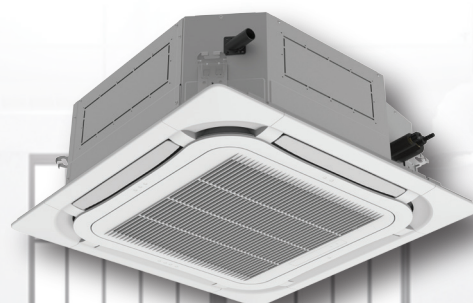
Self
-diagnosis



Wide
operation
range



Wide
voltage
range



* Images are for design use only. It might be different with the real product.

1
YEAR

**WARRANTY FOR
SPARE PARTS**

3
YEARS

**WARRANTY FOR
COMPRESSOR**

*Warranty for 3.0HP / 3 Phase and Above



GREE MALAYSIA
www.greemalaysia.com.my

GREE MALAYSIA SDN BHD
(1132718-M)

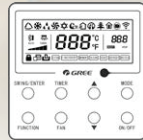
Ceiling Cassette Unit



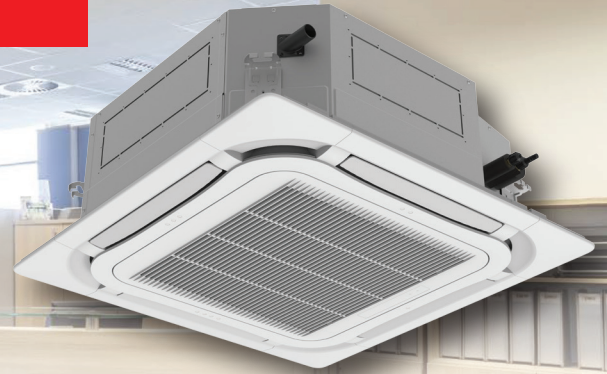
YB1FA (Standard)



XK75 (Optional)



XK117 (Optional)



Indoor Unit	Model		GULD18T/A-T	GULD24T/A-T	GULD30T/A-T	GULD36T/A-T	GULD42T/A-T
Electrical Data	Power Supply	V-Hz-Ph	220-240 / 208-230 -50/60-1				
	Power Input	kW	0.050	0.050	0.100	0.165	0.165
Sound Pressure		dB (A)	43/42/40/39		50/48/46/42	52/51/48/45	
Refrigerant			R32				
Air Flow Volume (RATED EXP)		CFM	647/618/565/507		883/865/812/728	1118/995/871/815	
		m3/h	1100/1050/960/860		1500/1470/1380/1240	1900/1690/1480/1380	
Fan Motor	Drive Type	-	Direct				
Drainage Connection Size		mm	φ25×1.5				
Dimension	Outline (W x D x H)	mm	840 x 840 x 240			840 x 840 x 290	
	Package (L x W x H)	mm	963 x 963 x 325			963 x 963 x 379	
Weight	Net / Gross	kg	29.0 / 36.0		31.0 / 38.0	36.0 / 44.0	
Loading Quantity (within panel)		20' GP	84			72	
		40' GP	168			144	
Panel	Outline (W x D x H)	mm	950 x 950 x 52				
	Package (W x D x H)	mm	1033 x 1038 x 112				
	Net Weight	kg	6				

Outdoor Unit		Model	GULD18W/NhA-T	GULD24W/NhA-T	GULD30W/NhA-T	GULD36W/NhA-T	GULD42W/NhA-T
Cooling Capacity	kW		5.30	7.30	8.80	10.60	11.98
	Btu/h		18,100	24,900	30,000	36,200	40,900
EER / C.O.P	W/W		3.63 / -	3.78 / -	3.09 / -	3.12 / -	3.33 / -
	Btu/h.W		12.40 / -	12.90 / -	10.53 / -	10.65 / -	11.36 / -
Electrical Data	Power Supply	V-Hz-Ph	220-240 / 208-230 -50/60-1				
	Power Input (R)	kW	1.46 (2.15)	1.93 (3.50)	2.85 (3.70)	3.40 (3.95)	3.60 (4.85)
	Input Current (R)	A	6.7 (11)	8.8 (17.50)	12.72 (19.00)	12.70 (20.00)	17.50 (23.00)
Sound Pressure (H / M / L)		dB (A)	52/-/-	52/-/-	53/-/-	55/-/-	55/-/-
Fan Motor	Drive Type		Direct	Direct	Direct	Direct	Direct
Compressor		W	1410	2420	2420	2420	3750
Dimension	Outline (W x D x H)	mm	818x 302 x 596	892 x 340 x 698	920 x 370 x 790	940 x 460 x 820	940 x 460 x 820
	Package (L x W x H)	mm	948 x 420 x 645	1029 x 458 x 750	1083 x 488 x 855	1083 x 488 x 855	1083 x 573 x 973
Weight	Net / Gross	kg	39 / 42	51 / 55	58 / 63	58 / 63	80 / 92
Loading Quantity		20' GP	36	31	23	23	22
		40' GP	81	67	56	56	48
Connection Pipe	Gas Additional Charge		g/m	16.0	30.0	40.0	40.0
	Outer Diameter	Liquid	inch	1/4" (0.250)	3/8" (0.375)	3/8" (0.375)	3/8" (0.375)
		Gas	inch	1/2" (0.500)	5/8" (0.625)	5/8" (0.625)	5/8" (0.625)
	Max Distance	Height	m	20	25	25	30
		Length	m	35	50	50	65

*NOTE: For The Improvement, The Specifications, Designs and Information In This Catalogue Are Subjected To Change Without Prior Notice.

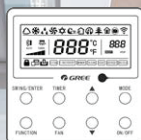
High Static Pressure Air Duct Unit



YB1FA (Standard)



XK75 (Optional)



XK117 (Optional)



Indoor Unit	Model		GULD18PS/A-T	GULD24PS/A-T	GULD30PHS/A-T	GULD36PHS/A-T	GULD42PHS/A-T
Electrical Data	Power Supply	V-Hz-Ph	220-240 / 208-230 -50/60-1				
	Power Input	kW	0.075	0.080	0.180	0.195	0.195
Sound Pressure		dB (A)	43/42/39/36	40/39/37/36	46/44/42/40	43/41/40/38	
Refrigerant			R32				
Air Flow Volume (RATED EXP)		CFM	559/518/483/412	706/682/646/553	1059/894/812/752	1295/1177/1023/883	
		m3/h	950/880/820/700	1200/1160/1100/940	1800/1520/1380/1280	2200/2000/1740/1500	
Fan Motor	Drive Type	-	Direct	Direct	Direct	Direct	
Drainage Connection Size		mm	φ26×2.5	φ26×2.5	φ26×2.5	φ26×2.5	
Dimension	Outline (W x D x H)	mm	1000 x 450 x 200	1300 x 450 x 220	1000 x 700 x 300	1400 x 700 x 300	
	Package (L x W x H)	mm	1308 x 568 x 275	1628 x 578 x 300	1205 x 813 x 360	1601 x 813 x 365	
Weight	Net / Gross	kg	26.0 / 31.0	31.0 / 38.0	41.0 / 47.0	50.0 / 56.0	
Loading Quantity (within panel)		20' GP	128	91	66	42	
		40' GP	288	196	138	84	

Outdoor Unit	Model		GULD18W/NhA-T	GULD24W/NhA-T	GULD30W/NhA-T	GULD36W/NhA-T	GULD42W/NhA-T
Cooling Capacity		kW	5.30	7.30	8.80	10.60	11.98
		Btu/h	18,100	24,900	30,000	36,200	40900
EER / C.O.P		W/W	3.53 / -	3.32 / -	3.18 / -	3.09/ -	3.57 / -
		Btu/h.W	12.07 / -	11.32 / -	10.83 / -	10.55 / -	12.17 / -
Electrical Data	Power Supply	V-Hz-Ph	220-240 / 208-230 -50/60-1				
	Power Input (R)	kW	1.50 (2.15)	2.20 (3.50)	2.77 (3.70)	3.43 (3.95)	3.36 (4.85)
	Input Current (R)	A	6.3 (11)	8.7 (17.50)	12.72 (19.00)	12.10 (20.00)	17.90 (23.00)
Sound Pressure (H / M / L)		dB (A)	52/-/-	52/-/-		53/-/-	55/-/-
Fan Motor	Drive Type		Direct	Direct		Direct	Direct
Compressor		W	1410	2420		2420	3750
Dimension	Outline (W x D x H)	mm	818x 302 x 596	892 x 340 x 698		920 x 370 x 790	940 x 460 x 820
	Package (L x W x H)	mm	948 x 420 x 645	1029 x 458 x 750		1083 x 488 x 855	1083 x 573 x 973
Weight	Net / Gross	kg	39 / 42	51 / 55		58 / 63	80 / 92
Loading Quantity		20' GP	54	41	38	25	20
		40' GP	112	84	82	56	45
Connection Pipe	Gas Additional Charge	g/m	16.0	30.0		40.0	40.0
	Outer Diameter	Liquid	inch	1/4" (0.250)		3/8" (0.375)	3/8" (0.375)
		Gas	inch	1/2" (0.500)		5/8" (0.625)	5/8" (0.625)
	Max Distance	Height	m	20		25	30
		Length	m	35		50	65

*NOTE: For The Improvement, The Specifications, Designs and Information In This Catalogue Are Subjected To Change Without Prior Notice.

Floor Ceiling Unit



YB1FA (Standard) XK75 (Optional) XK117 (Optional)



Indoor Unit	Model		GULD18ZD/A-T	GULD24ZD/A-T	GULD30ZD/A-T	GULD36ZD/A-T	GULD42ZD/A-T
Electrical Data	Power Supply	V-Hz-Ph	220-240 / 208-230 -50/60-1				
	Power Input	kW	0.055	0.080	0.110	0.150	0.150
Sound Pressure		dB (A)	44/42/39/36	45/44/41/38	49/47/45/43	52/50/48/44	
Refrigerant			R32				
Air Flow Volume (RATED EXP)		CFM	500/471/412/353	765/718/646/553	942/883/794/742	1236/1177/1059/881	
		m3/h	850/800/700/600	1300/1220/1100/940	1600/1500/1350/1260	2100/2000/1800/1500	
Fan Motor	Drive Type	-	Direct	Direct	Direct	Direct	
Drainage Connection Size		mm	φ17×1.5	φ17×1.5	φ17×1.5	φ17×1.5	
Dimension	Outline (W x D x H)	mm	870 x 665 x 235	1200 x 665 x 235	1200 x 665 x 235	1570 x 665 x 235	
	Package (L x W x H)	mm	1033 x770 x 300	1363 x770 x 300	1363 x 770 x 300	1729 x 770 x 300	
Weight	Net / Gross	kg	26.0 / 31.0	31.0 / 37.0	32.0 / 38.0	42.0 / 49.0	
Loading Quantity (within panel)		20' GP	112	84	84	63	
		40' GP	238	175	175	133	

Outdoor Unit	Model		GULD18W/NhA-T	GULD24W/NhA-T	GULD30W/NhA-T	GULD36W/NhA-T	GULD42W/NhA-T
Cooling Capacity	kW		4.80	7.30	8.80	10.60	11.98
	Btu/h		16,400	24,900	30,000	36,200	40,900
EER / C.O.P	W/W		3.66 / -	3.44 / -	3.18 / -	3.41/ -	3.19 / -
	Btu/h.W		12.52 / -	11.75 / -	10.83 / -	11.64 / -	10.91 / -
Electrical Data	Power Supply	V-Hz-Ph	220-240 / 208-230 -50/60-1				
	Power Input (R)	kW	1.31 (2.15)	2.12 (3.50)	2.77 (3.70)	3.11 (3.95)	3.75 (4.85)
	Input Current (R)	A	6.7 (11)	8.6 (17.50)	11.81 (19.00)	12.70 (20.00)	15.70 (23.00)
Sound Pressure (H / M / L)		dB (A)	52/-/-	52/-/-		53/-/-	55/-/-
Fan Motor	Drive Type		Direct	Direct		Direct	Direct
Compressor		W	1410	2420		2420	3750
Dimension	Outline (W x D x H)	mm	818x 302 x 596	892 x 340 x 698		920 x 370 x 790	940 x 460 x 820
	Package (L x W x H)	mm	948 x 420 x 645	1029 x 458 x 750		1083 x 488 x 855	1083 x 573 x 973
Weight	Net / Gross	kg	39 / 42	51 / 55		58 / 63	80 / 92
Loading Quantity	20' GP		47	37		23	27
	40' GP		110	81		67	58
Connection Pipe	Gas Additional Charge		g/m	16.0	30.0	40.0	40.0
	Outer Diameter	Liquid	inch	1/4" (0.250)	3/8" (0.375)	3/8" (0.375)	3/8" (0.375)
		Gas	inch	1/2" (0.500)	5/8" (0.625)	5/8" (0.625)	5/8" (0.625)
	Max Distance	Height	m	20	25	25	30
		Length	m	35	50	50	65

*NOTE: For The Improvement, The Specifications, Designs and Information In This Catalogue Are Subjected To Change Without Prior Notice.